

Christmas

A-Z



A



is for angel



B

is for bullfinch



is for candy



D

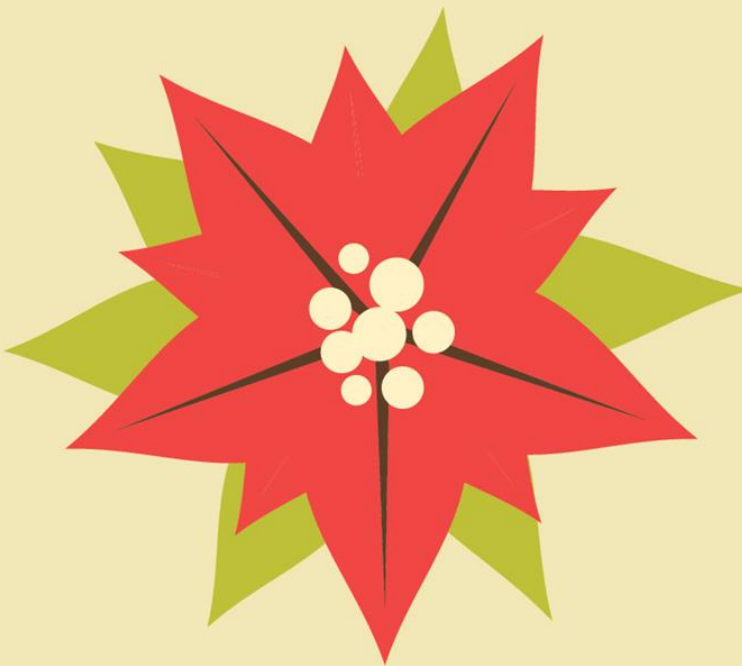
is for deer

E



is for elf

F



is for flower

G

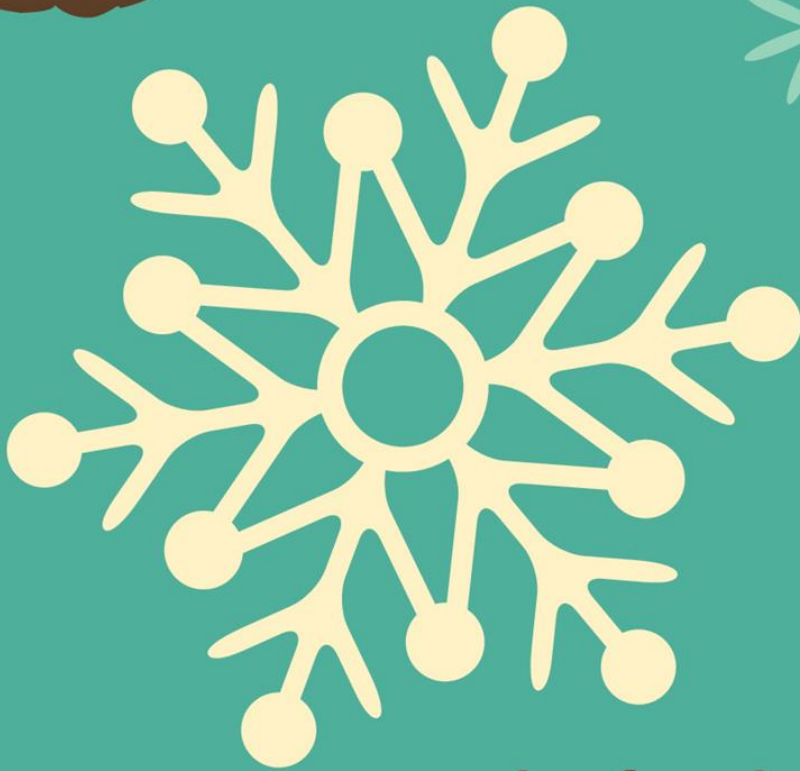


is for gift



H

is for holly



is for ice



is for jingle bells



is for king

L



is for lights



is for mittens

N



is for nutcracker



is for ornaments



is for peace

Q



is for quilt

R



is for ribbon

S



is for snowman



is for tree



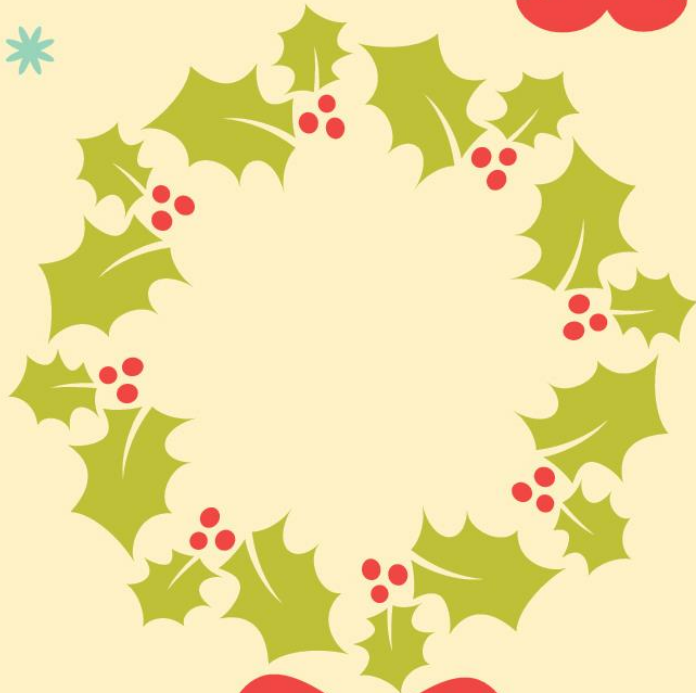
is for umbrella

V



is for village

W



is for wreath



is for Xmas



Y

is for yule

Z



is for z z z z.....